

CREAN LUTHERAN HIGH SCHOOL ANNUAL REPORT



CHRISTIAN • LEARNER • SERVANT





Therefore, prepare your minds for action; be self-controlled; set your hope fully on the grace to be given you when Jesus Christ is revealed. As obedient children, do not conform to the evil desires you had when you lived in ignorance. But just as he who called you is holy, so be holy in all you do; for it is written: "Be holy, because I am holy."

1 Peter 1:13-16

“Thus Far The LORD Has Brought Us.” I Samuel 7:12

Dear Faithful Friend of Crean Lutheran High School,

“Therefore the Lord Himself will give you a sign: Behold, a virgin will be with child and bear a son, and she will call His name Immanuel.” Isaiah 7:14

As we anticipate the season of Advent and the celebration of the Greatest Gift ever given, we, at Crean Lutheran High School, stand humbled and amazed by the many earthly blessings the Lord has showered upon CLHS in 2014.

By God’s grace, our immensely-talented faculty and staff have mentored and shepherded our students on a variety of noteworthy accomplishments this year. Academically, CLHS students are motivated, challenged, and encouraged by instructors who present material from a Christian Worldview, and guide them in consistently performing above state and national averages on SAT, ACT, and Advanced Placement exams, as well as in dual credit classes that allow them to gain college credits while still in high school. Students participating in the Visual and Performing Arts have earned numerous awards and have performed brilliantly on local, regional and national stages. On the field of competition, Saints Athletics has also celebrated a great deal of success, including a major milestone of capturing the coveted Academy Cup, which is annually awarded to the top athletic program in the Academy League based upon final league standings for all sports.

These blessings, and countless others that have been recorded this year, are gifts that have been nurtured by the CLHS staff in lockstep with the Apostle Paul’s epistle to the Romans on what it is to be a living sacrifice. *“We have different gifts, according to the grace given to each of us. If your gift is prophesying, then prophesy in accordance with your faith; if it is serving, then serve; if it is teaching, then teach; if it is to encourage, then give encouragement; if it is giving, then give generously; if it is to lead, do it diligently; if it is to show mercy, do it cheerfully.”* Romans 12:6-8.

As you consider your gifts and the ways in which the Lord has blessed you, we ask you to prayerfully consider this passage and reflect upon ways you might be able to share these gifts with Crean Lutheran to help us strengthen the school. “If it is giving...” then we would be blessed to have you consider supporting the school financially as part of your tithing or charitable giving, which can be accomplished by visiting the “Giving” link on our website, or by contacting our Development Office.

On behalf of all the Saints of Crean Lutheran High School, thank you for your all your prayers and support in our pursuit of “Proclaiming Jesus Christ Through Excellence in Education.”

In Christ,

In His Service,

Mr. Jeffrey Beavers
Executive Director, Operations

Mr. Brian Underwood
Executive Director, Administration



Crean Lutheran High School • A Year in Review



Academics

- Crean Lutheran celebrated its 5th graduating class, bringing its alumni total to almost 450 Saints in the mission field.
- For the 2013-14 academic year, CLHS students scored an average of 1595 on the SAT and 25 on the ACT. The top 25 percent of CLHS students who took the SAT scored an average of 1790.
- CLHS now offers 21 Advanced Placement courses, 13 Honors courses, and 18 Early College Program courses.
- All collegiate level courses have gone through approval via the College Board and/or the University Of California Board Of Regents for the “A-G List.
- Taehyung Kim, Class of 2014, was selected by the National Merit Scholarship Program as a National Merit Finalist out of 1.5 million candidates based upon his overall academic record and his PSAT score. Earning Commended Scholars status for the Class of 2015 were Cassidy Bauer, Jenny Kim, Matthew Kwak, and Krishna Pakalapati.

- In the past year, CLHS launched its highly anticipated cohort program to provide pre-qualified students interested in specific fields of study the opportunity for rigorous coursework offerings alongside exposure to professionals and industry-specific facilities to provide them with a foundation from which they may grow into Christ-centered and discipleship-minded professionals. After the successful debuting of its Medical and Engineering Cohorts, CLHS has plans to add a Business Cohort in 2015 and Ministry in 2016.
- Over the past three years, 100 percent of CLHS graduates were accepted into colleges and universities.

Advancement

- The Development Office welcomed 170 grandparents to its annual Grandparents Day Chapel & Reception, featuring a special message from CLHS grandparents John and Sandra Rodebaugh.
- Instituted to support the Treasure the Truth Campaign, CLHS hosted 130 golfers for the Saints Golf Classic in May at the Tustin Ranch Golf Course.
- By the close of the 2013-14 fiscal year in June of 2014, Crean Lutheran, by God’s grace, had received over \$775,000 in donations on behalf of the Treasure the Truth Campaign.
- On September 2, 2014 Crean Lutheran High School was honored to recognize and thank Budge and Carol Collins for their longstanding support of CLHS by naming the Event Center floor Collins Court during a special ceremony prior to the season opening match for the girls’ volleyball program.
- The November 2014 Treasure the Truth Benefit Dinner at the Irvine Marriott provided a joyful evening of fun and fellowship that also marked the issuance of the inaugural Patron Saints Award to the John and Donna Crean Family and Foundation in recognition of their advancement of the school’s mission statement of “Proclaiming Jesus Christ Through Excellence in Education.”
- In December 2014, the Development Office launched a community-wide rewards program initiative to generate resources for schoolwide needs by promoting online shopping through well-known commercial entities.

“Bring up your children in the training and instruction of the Lord.” Ephesians 6:4



Arts

- The Concert Choir took its first-ever choir tour in March, performing at St. John's Lutheran School in Bakersfield, Bethany Lutheran school in Vacaville, Sunny View Christian Retirement Home in Cupertino, and Trinity Lutheran Church in San Francisco.
- In April, members of the Dance Department visited and took part in dance classes at the renowned Broadway Dance Center, Alvin Ailey American Dance Theater, and the Steps on Broadway Premier Dance Studio in New York City.
- Students Lucy Park and Katelyn Ahn took first and second place, respectively, in the Irvine Youth Art Show sponsored by the Irvine Fine Arts Center.
- A video production team including Jenny Kim, Kevin Kim, Tyler Koski, and Chase Masters coalesced their collective talents to win the 2014 Toyota Teen Driving Video Challenge, a national competition designed to promote driver safety among teenagers.
- Violinists David Chang and Hasun Yoo were accepted into Juilliard and the New England Conservatory of music, respectively. Additionally, Yoo was selected as a finalist for the OC Varsity Arts Instrumental Musician of the Year competition, sponsored by the Orange County Register.
- The CLHS Dance Department hosted its annual benefit concert on behalf of Comfort Zone, a bereavement camp that provides healing for those who have experienced the loss of a parent, sibling, or caregiver.
- Students from the school's Art Department won first prize at the inaugural 2014 Pumpkin Glow Sculpture Carving Contest, sponsored by FivePoint Communities.
- The Chamber Choir performed with acclaim at the Fall Leadership Conference for the Lutheran Church Extension Fund held in Garden Grove.
- Members of the CLHS community were treated to wonderful theatrical performances in 2014, including the Spring production of Alice and the Advent production of A Christmas Carol.

Crean Lutheran High School • A Year in Review



Admissions

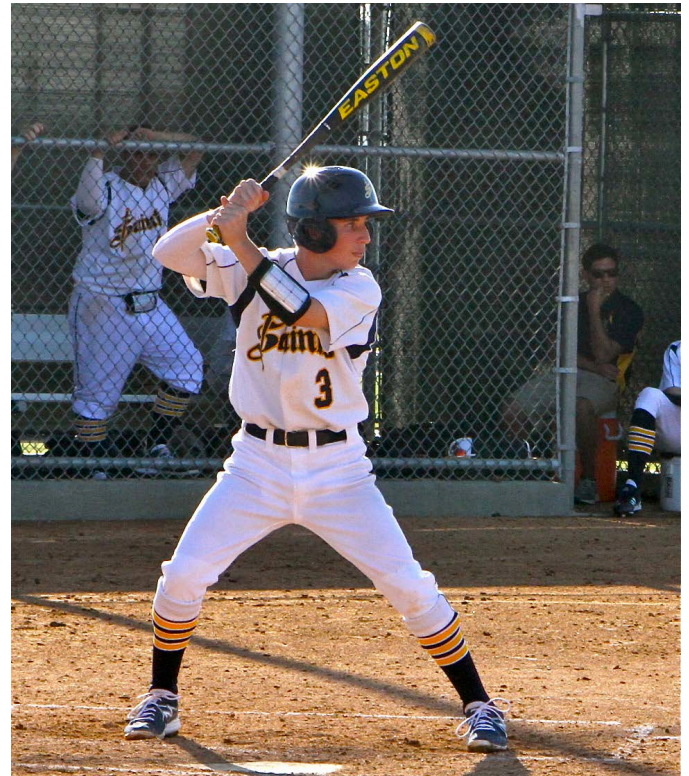
- Crean Lutheran became the fourth largest Lutheran high school in the lauded LC-MS school system with 750 students.
- CLHS was blessed by a record number of applications for the 2014-15 academic year.
- Year-to-date applications for the 2015-16 school year, as of the end of November, reflected a 30 percent increase over the prior year.
- For the eighth straight year CLHS was blessed to be acknowledged as the fastest starting Lutheran high school in Church history.
- In an effort to extend the opportunity for a top tier Christian education to as many families as possible, CLHS committed nearly \$1 million dollars in need-based financial aid for the 2014-15 school year.

Athletics

- The Crean Lutheran Athletic Department captured the coveted Academy League Cup for overall excellence in competition and performance. Nine teams won league titles and ten teams made strong runs in the CIF playoffs during the 2013-14 school year.
- Eight members of the Class of 2014 committed to competing on the 4-year college level. They included: Hannah Barney (Soccer, Trevecca Nazarene), Maddie Beavers (Track & Field - Westmont), Kiley Carlson (Diving - Boise State), Grace Dimond (Volleyball - Grand Canyon University), Lindsey Engel (Swimming - Stanford), Niko Ramadan (Tennis - UCLA), Blake Smith (Tennis - Point Loma Nazarene), Justin Zhang (Tennis - UC San Diego).

Spring Highlights Included:

- Boys Baseball won its second straight league championship and advanced to the semifinals of the CIF playoffs.
- Boys Tennis earned its first Academy League title and reached the semifinals of the CIF Division II team tournament. Individually, Niko Ramadan and Justin Zhang advanced to the Round of 20 in the CIF Individual Open Championship Sectional.
- Boys and Girls Track & Field each won league titles, resulting in 20 athletes who qualified for CIF Prelims and 1 athlete advancing to the CIF Track & Field Championships.
- Girls Swimming & Diving won its second straight CIF Division III title, which also helped clinch the boys and girls combined title.
- Five members of the girls' swim team earned all-county honors, including senior Lindsey Engel, who was also named the Orange County Register's Girls Small School Athlete of the Year.
- Spring Academy All-League Selections included 2 - MVP's, 36 - 1st team honorees, 21 - 2nd team honorees and 4 - Honorable Mention recipients.
- Swim Coach Craig Brown was named the Orange County Register's Swim Coach of the Year.
- The Cheer and Song teams attended USA National Competition at the Anaheim Convention Center.

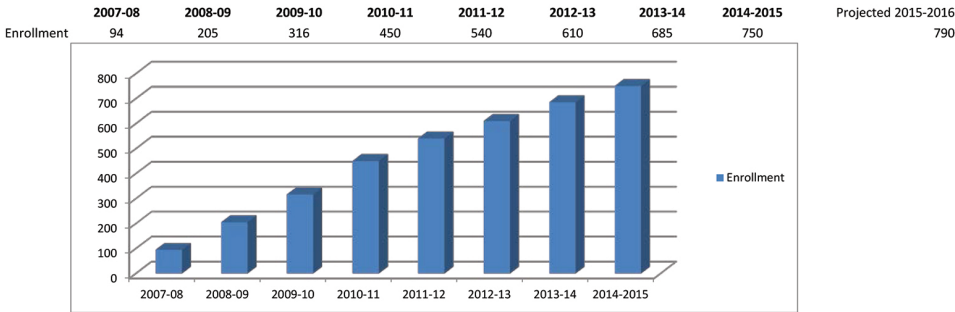


Fall Highlights Included:

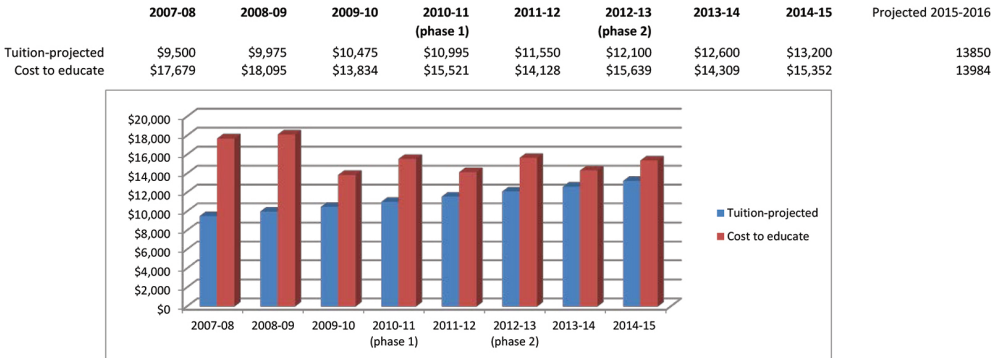
- Girls Cross Country captured its third straight Academy League Championships and advanced to the CIF Prelims.
- Crean Lutheran celebrated its first season of water polo with a co-ed team that greatly improved with each match.
- Girls Volleyball finished third in the Academy League and advanced to the CIF playoffs for the fourth consecutive year.
- Football enjoyed a breakout year by clinching third place in the Academy League to earn its first CIF playoff berth in school history.
- Fall Academy League All-League Selections included 15 - 1st team honorees, 10 - 2nd team honorees and 2 - Honorable Mention recipients.

Crean Lutheran High School • Financial Report 2014

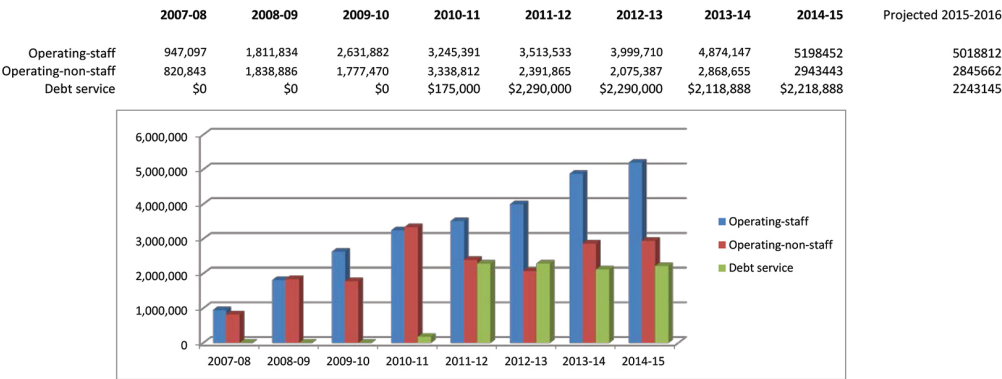
Crean Lutheran High School Enrollment



Crean Lutheran Tuition vs. Cost to Educate



Crean Lutheran Expenses



“I have no greater joy than to hear that my children are walking in the Truth.” 3 John 4

Crean Lutheran High School • Patron Saints 2013-2014

Abendroth, Kathy	Brown, Roger and Joyce	Eastin, Jeffrey and Elizabeth
Abendroth, Kathy and Douglas	Brubaker, Jill and William	Eaton, Martin and Debra Jade
Abiding Savior Lutheran Church and School	Buffington, Debora	Ecolab Foundation
Alameda Company	Building Code Solutions, Inc.	Eguchi, Marc
Albright, Clare	Bussey, Duke and Donna	Ellwein, Kenneth and Judith
Aliso Viejo Christian School	Calico Building Services	Ellwein, Lisa and Craig
Anderson, Cynthia	California Rail Supply	Eschelbach, Michael and Emily
Antoun, Amin and Jacqueline	Canyon Foods, Inc.	Fairchild, Michael and Noel
Arnold, Calvin	Carno, Anna	Fang, Qian
Ashmon, Ann	Case, Larry and Stacy	Fangary, Sam and Angela
AT&T United Way/Employee Giving	Cha, Hyun Ju	Farmers & Merchants Bank
Baker, Cathryn	Chaney, Karen	Fidelity Charitable Gift Fund
Bancroft, Ellen	Chao, Mark and Michelle	Flathers, Jerry
Bartlett, William and Cynthia	Chapman University	Fleer, Robert and Joy Bergk
Beauregard, Gregory and Debra	Chen, Lai	Fluegge, Glenn and Susan
Beavers, Jeffrey and Lisa	Cheng, Ping	Folsom, Greg
Beavis, Wesley and Eleanor	Clayton, CM	Folsom, Lynda and Gary
Beniche, Frank and Lori	Collins, Budge and Carol	Fong, Johnny and Sunny Yuching
Berkel, Jeffrey and Susan	Colormaker, Inc.	Foundation for American Faith/Oppty
Betz, Brian and Christie	Concordia University	Frankel, John and Dorothy
Betz, Raymond and Judith	Connell Chevrolet	Gentry Golf, Inc
Beyer, Ken and Amy	Cowles, Sandra	Ghassemi, Mark and Hilda
Bloomfield, Keegan and Anna	Crichton, Andrew and Shelley	Gilliland Company
BOGH Engineering, Inc.	DBMR Associates, Inc.	Gilliland, Frank and Betty
Bognoski, Jan	Delaney, Myrona	GMU Geotechnical, Inc.
Boreland, Michael and Caryn	Denault, James and Ruth Family Trust	Golchini, Keivan and Mincin
	Double Honor Insurance	Gossenberger, Carol

Crean Lutheran High School • Patron Saints 2013-2014

Hamilton, Wayne and Arlene	Leach, Richard and Kathy	Moriarty Holdings/Reindeer Forest
Hammerle, WL and JA	Lee, Helen	Morris, Dave and Candace
Hancock, Julie	Lee, Hyun Joung	Moyer, Daniel and Sarah
Heo, Wook	Lett, Clifton and Sonya	Muller, Janet
Hobus, Steve and Mary	Leuteritz, Kimiya and David Van	National Church Purchasing Group
Horn, Robert and Keigh Lee	Overeem	Needham, Rick and Laura
Hur, Eun Heang and Woo Yun Jung	Lissoy, Scott and Christine	Nie, Yinghong
Hur, Jeonghey	Liu, Mei Hong	O'Brien, Scott and Dawn
Hynes, India Ravel and Anthony	Liu, Xi	O'Connell Landscape Maintenance, Inc.
Isaacs, Sheryl and Matthew	Lunsford, Robin and Sara	O'Grattan, Michael and Karla
Jesse, Mike and Kathi	Lutheran Church Extension Fund	Ollin International
Jin, Chen Lai	Ma, Bo	Olson, Eric
Jung, Eunjung	Mahlberg, Jean	Orgill, Ray and Allison
Jung, Joline and Duane	Marhoefer, Kenneth and Kathleen	Orrantia, M. Scott
Kang, Hyun and Chong Chan Joo	Matthews, Nicole	Park, Dongsuk and Jaeyon Kim
Kiani, Jahan and Suzanne	Matthews, Tim and Nicole	Park, Hong Wook
Kiley, Mike and Dana	Mattila, Cherie Colette	Park, Wee Song
Kim, Eun Jung and Hong Wook Park	Maurer, Robert and Jody	Paugh, Jerry and Lorna
Kim, Hyunjoong and Hyong Jung	McClatchy, Robert	Peak, James and Deirdre
Kim, Songmi	McMillian, Rex and Rebecca	Perkins, Frank and Ellen Kay
Kim, Young Mi	McMillian, Rex and Rebecca	Pet Supply Warehouse
Klitzing, Mark and Rachel	McShane, Paul	Pico Center, Inc
Koyamatsu, Kyle and Linda	Meador, Carl and Tammy	Pindroh, John and Pam
Kroger Company	Meador, Ed	Pino, Steven and Mary
Krueger, Kurt and Valerie	Mellott, John and Laura	Placek, Craig and Deborah
Lah, Sherrie	Mertens, Brett and Leigh Ann	Porter, Julie and Stuart Cairney
Lammers, Mark	Mitchell, Barry and Kathryn	Randall, John

If one of you wants to build a tower, will he not first sit down and count the cost? Luke 14.28

Crean Lutheran High School • Patron Saints 2013-2014

Reichenbach, Timothy and Paula

Ren, Chungjian

Rhodes, David and Cindi

Richardson, Steven and Michele

Rigoni, Theodore and Kari

Rizio, Gregory and Ericka

Robinson, Geri and David

Rodebaugh, Sandra and John

Romero, David

Saltzgiver, Dan and Jean

Santa Barbara Foundation

Saylor, Dennis and Mary Sue

Schlueter, Kenneth and Mary

Schramm, Martin and Conni

Schulteis, Michael and Melinda

Schumacher, Benjamin and Jocelyn

Schumacher, Roger and Jocelyn

Sciarra, James and Barbara

Scriven, Jon and Kelly

Seeds, Sharon

Senkbeil, Peter and Kathryn

Seung Eun Lee UTMA for

Hee Sung Kang

Seung Eun Lee for Hee Sung Kang

Shen, Yu

Shibuya, Terry and Joyce

Shiery, Carolyn

Sims, Lynn and Carolyn

Slane, Robert and Diana

Smith, Beverly

Son, Seok and Soh Weon Jeong

Song, Youngji

Sorensen, Doug and Nancy

Spadoni, Linda and James

St. John's Lutheran Church of Orange

Stelling, G Edmund

Straka, Jeffrey and Kathleen

Strasmann, Kurt and Cynthia

Su, Xuemei and Jinghe Shang

Talmage, Phyllis

Taylor, Joyce

The Antoun Group

The Counter

The Upper Room Presents, Inc.

Thompson, Robert and Cynthia

Thompson, Timothy

Thrivent Financial for Lutherans

Tiber, Kevin and Elaine

Tomlinson, William and Kelley

Tooker, Chris and Lori

Trefethen Advisors, LLC

Treloar, Julie Ann and Owen

Truhome Realty, Inc.

Underwood, Brian and Allyson

Uniforms 4 U, Inc.

Updyke, Alan and Gina Ciampaglia

Valdivia, Jim

Vallender, Stanley and Paula

Vano, Peter

Verhoef, Karl

Verhoef, Kim

Volz, James and Erika

Vosbigian, Steven and Victoria

Wackeen, Richard and Sharon

Wang, Calvin

Wendt Landscape Services, Inc.

Werner, Richard and Monte Jean

Wible, K. Douglas and Julie

Wichmann, Donald and Erika

Williams, Walter and Sandra

Witt, Stephen and Janice

Worthington, Glen and Karen

Wu, Daniel and Jessica

Xing, Liming

Yi, Lin

Yoo, Minha

Young, Roger and Kerry

Zhang, Kun

Zheng, Ping

Zhou, Li and Huilin Wang



2014 Treasure the Truth Dinner

The Sixth Annual Treasure the Truth Benefit Dinner held on November 1, 2014, at the Irvine Marriott was a wonderful success and raised over \$200,000. With over 300 enthusiastic guests in attendance, we celebrated the blessings and successes of Crean Lutheran's progress and reflected on how far the Lord has brought us.

2014 Saints Golf Classic

The Fifth Annual Saints Golf Classic provided us with a beautiful day on the Tustin Ranch Golf Course and raised \$30,000 for CLHS. Special thanks to James Spadoni, Director of Operations and the Golf Classic Committee for their amazing support.

Patron Saints Paver

CLHS is offering the community a unique opportunity to publicly celebrate their support of Crean Lutheran High School with the purchase of a commemorative Patron Saint Paver Stone. These 12" x 6" sections of history have been master planned for the front walkway of the campus. Donation Price: \$1,000.00 each.

Coming Up in 2015 - Saints Golf Classic

All CLHS golfers and friends need to reserve Friday, May 15, 2015 for The Saints Golf Classic at the Tustin Ranch Golf Club. We are excited for the first time to host this event on a Friday to encourage more participation from golfers and dinner guests. All golfers will be treated to a first class day on the links that also includes multiple contests and awards, lunch, reception, and dinner. The evening will wrap up with a delicious homestyle barbeque, auctions, and raffles.

"Where your treasure is, there your heart will be also." Matthew 6:21



The Treasure the Truth Campaign (TTC)

The Treasure the Truth Campaign is equipped to facilitate donations in several ways. If you have any questions, or if you wish to donate but have specific needs, please contact the CLHS Development Office.

Electronic Fund Transfer (EFT): The easiest way to support CLHS is by visiting the “Giving” link on the CLHS website, www.clshs.org.

Cash Donations: Annual gifts paid by check should include a note in the memo section “TTC” and be accompanied by the TTC Pledge Card or other form of designation.

Matching Gifts: All donors are strongly encouraged to check with their employers about matching gift opportunities. Visit the Giving link for more details.

Billing: Individuals who do not wish to use the EFT option may spread donations out over the course of the year by indicating preferred billing terms on the pledge card.

Credit Card: CLHS can facilitate donations by processing VISA and MasterCard transactions. Please note that vendor fees reduce net donations to CLHS by 3 percent.

Stock & Property: The TTC welcomes gifts of appreciated stock

and other securities which may make the donor eligible for tax savings.

Life Insurance & Planned Giving: There are many ways in which life insurance policies may be used to make a contribution. A number of other planned gift vehicles, such as bequests, trusts, and other annuities are also available to make a more generous gift to CLHS while receiving financial benefits.

Gifts-in-Kind: Crean Lutheran welcomes donated items and services that would ordinarily be purchased for operational purposes, for the furtherance of advancement efforts (e.g. auction items), and/or for the development of the campus.

Shop for the Saints: Visit CLSHS.org/REWARDS to support CLHS with your shopping at Amazon and all your other favorite stores.

Note: Restricted vs. Unrestricted Gifts: Gifts that are earmarked for specific programs (e.g. restricted gifts) are eligible for tax deductible credit, less the cost of any tangible goods-services received, but are not eligible to receive the benefits listed on the benefit chart. Donations to the TTC (e.g. unrestricted gifts) are eligible to receive the benefits listed on the benefits chart.

Crean Lutheran High School • Board of Directors 2014-2015



President Rick Needham

Attorney, Real Estate Developer, member of Lutheran Church of the Cross, Aliso Viejo, CA

Vice President Loren Kramer

Former President of Pacific SW District, LCMS, member of Faith Lutheran Church, Capistrano Beach, CA

Treasurer Donna Bussey

Business Administrator, member of Lutheran Church of the Cross, Laguna Woods, CA

Secretary Carolyn Sims

Retired Principal of Abiding Savior Lutheran School, member of Abiding Savior Lutheran Church, Lake Forest, CA

Mike Anderson

Pastor, Good Shepherd Lutheran Church, Irvine, CA

Ann Ashmon

Director of Communications, Marketing and Communication Department, Concordia University-Irvine, member of St. Paul's Lutheran Church of Irvine.

Frank Beniche

Senior Manager-Honda Motor Co., member of Abiding Savior Lutheran Church, Lake Forest, CA

Noel Fairchild

Director of Christian Education, Light of Christ Lutheran Church, Irvine

Bill Hammerle

Vice President for Special Programs, FivePoint Communities, member of Holy Family Cathedral, Orange, CA

Kathy Hutchins

Principal, Aliso Viejo Christian School and member of Lutheran Church of the Cross, Aliso Viejo, CA

Kurt Krueger

President of Concordia University, Irvine, and member of St. Johns Lutheran Church, Orange, CA

Rick Leach

Businessman, Saints Shutterbug Coordinator, parent of an alum, member at Mt. of Olives Lutheran Church, Mission Viejo, CA

Janet Muller

Professor in the School of Business, Concordia University, Irvine, member of Faith Lutheran Church, Capistrano Beach, CA

John Randall

Assistant Professor of Instructional Design, Concordia University, Irvine, member of Abiding Savior Lutheran Church, Lake Forest, CA

Geri Robinson

Executive Consultant, member of Lutheran Church of the Cross, Laguna Woods CA

Glenn Shelton

Associate Pastor at Christ Lutheran Church, Costa Mesa, CA

Ed Stelling

Retired principal and educator, missionary to Liberia, and staff member of Lutheran Bible Translators, member of Christ Lutheran Church, Costa Mesa, CA

Bill Tomlinson

Property Management Executive, Tomlinson Management, Inc., member of Voyagers Bible Church of Irvine, CA

Ron Van Blarcom

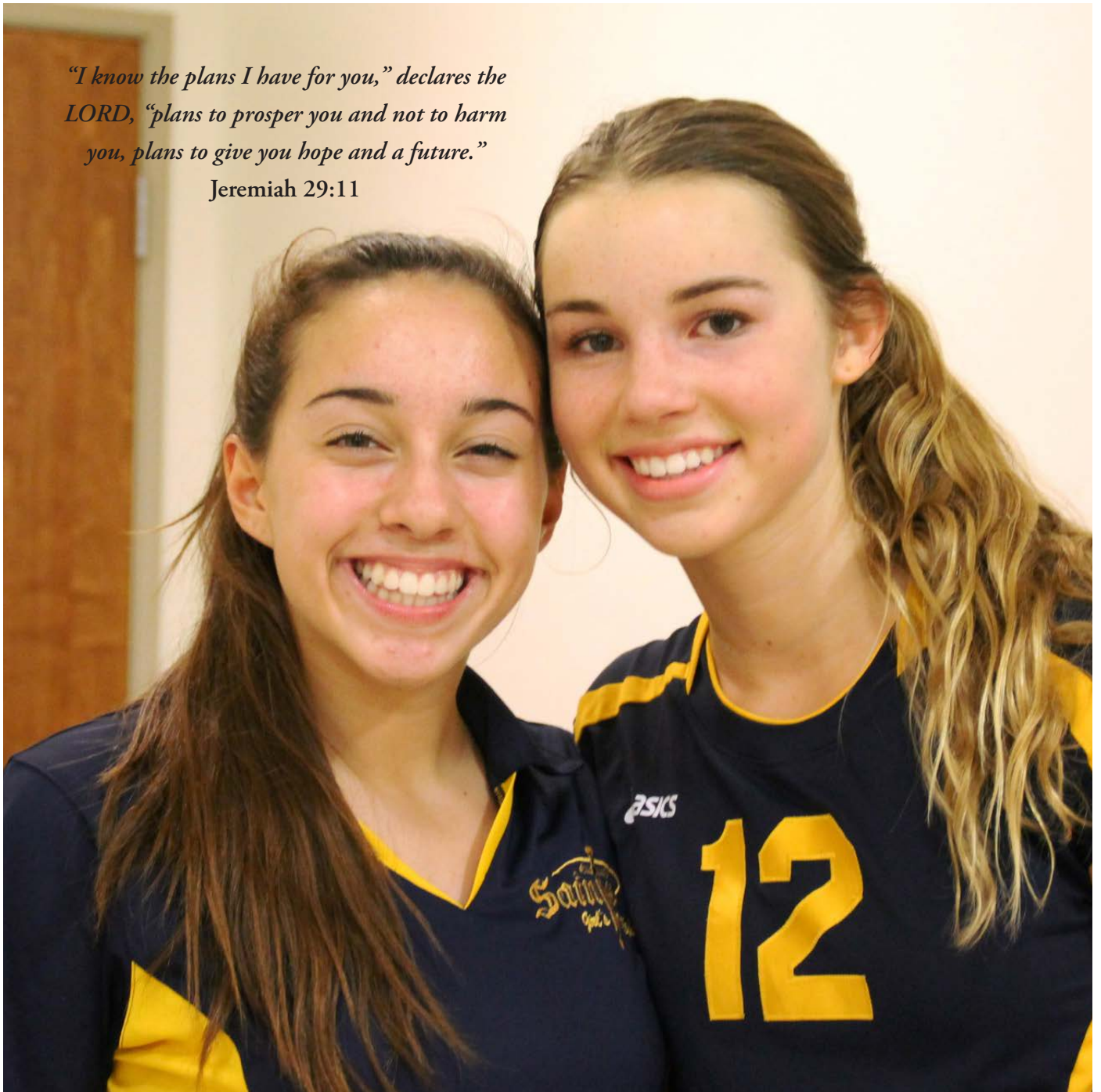
Lawyer, General Counsel, Concordia University, Irvine, member of St. John's Lutheran Church, Orange, CA

Rob Warren

Businessman and ordained pastor at Lutheran Church of the Cross, Laguna Woods, CA

"I know the plans I have for you," declares the LORD, "plans to prosper you and not to harm you, plans to give you hope and a future."

Jeremiah 29:11





CREAN LUTHERAN HIGH SCHOOL

12500 Sand Canyon Avenue, Irvine, California 92618 • Telephone 949.387.1199

www.clshs.org/giving